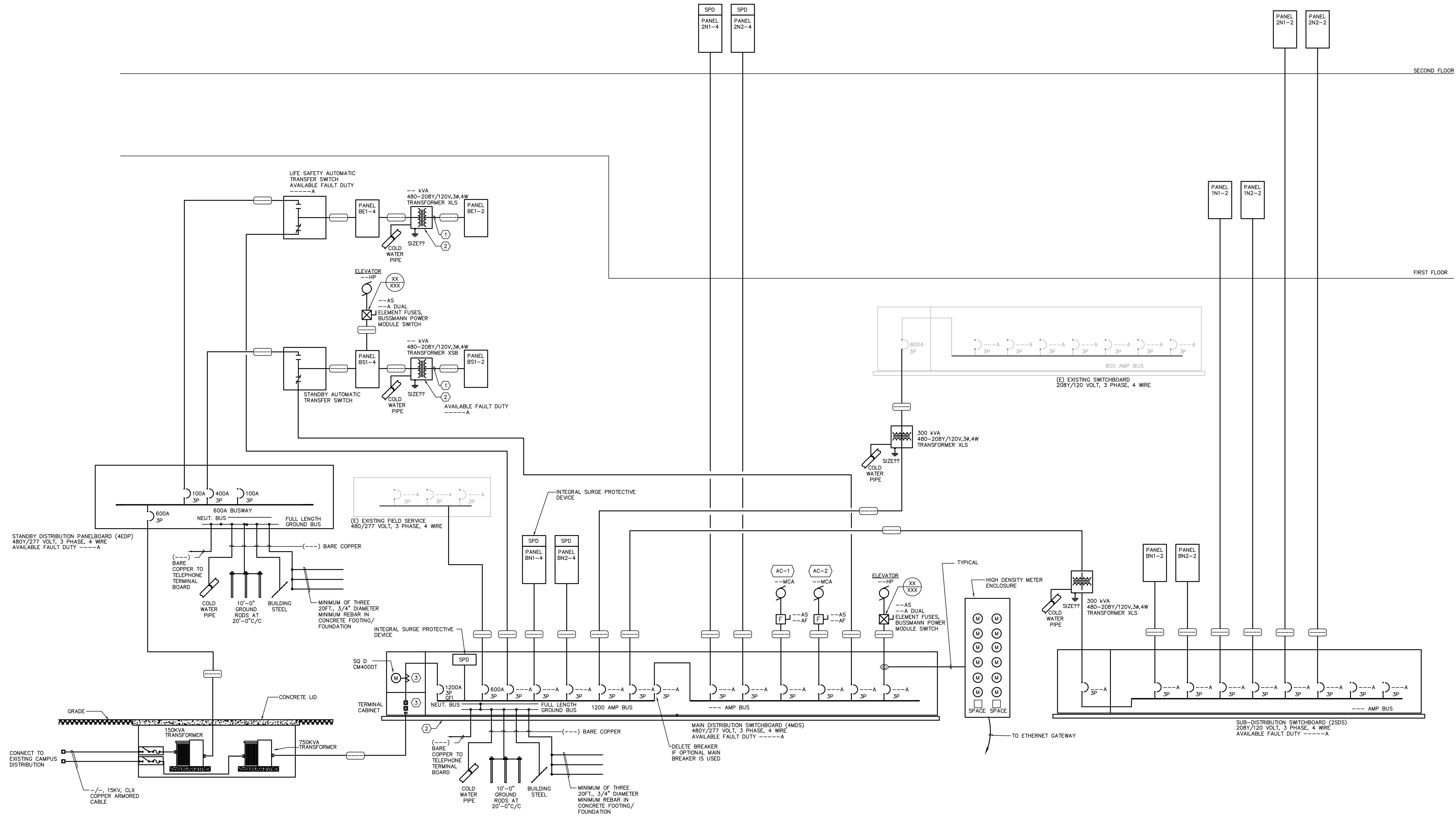


SHEET KEYNOTES

1. INSTALL FEEDER FROM TRANSFORMER SECONDARY TO MAIN BREAKER IN SWITCHBOARD / PANEL, NOT TO EXCEED 25 FEET PER NEC 240.21(C)(6).
2. PROVIDE 3-1/2 INCH HIGH CONCRETE HOUSEKEEPING PAD UNDER TRANSFORMER/SWITCHBOARD.
3. CURRENT TRANSFORMER/TERMINAL CABINET PER POWER COMPANY REQUIREMENTS.



ONE-LINE POWER DISTRIBUTION DIAGRAM

480Y/277 VOLTS, 3 PHASE, 4 WIRE NOT TO SCALE